



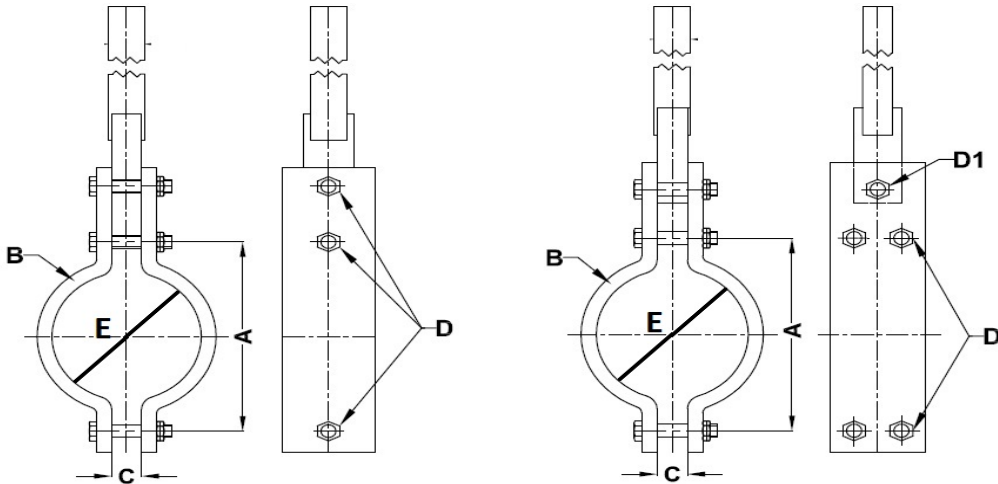
# SWATHI ENGINEERS

swathiengineers.nsk@gmail.com

www.swathiengineers.com

## Pipe Hangers

**Material:** Carbon Steel      **Finish:** Painted  
**Max Temp:** 650° F or 343° C



**Size- 1/2" to 8"**

**Size- 10" to 20"**

**DIMENSIONAL CHART**

Pipe Size inches	Pipe Size mm	E mm	A mm	B mm	C mm	D mm	D1 mm
0.5	15	22	60	30x5	8	M10x35	
0.75	20	27	64	30x5	8	M10x35	
1	25	34	76	30x5	8	M10x35	
1.25	32	43	82	30x5	8	M10x35	
1.5	40	49	92	30x5	8	M10x35	
2	50	61	108	40x6	10	M12x45	
2.5	65	77	134	40x6	10	M12x45	
3	80	89	139	40x6	10	M12x45	
4	100	115	180	50x8	12	M16x50	
5	125	140	202	50x8	12	M16x50	
6	150	169	234	50x8	12	M16x50	
8	200	220	289	50x8	12	M16x50	
10	250	273	359	125x15	42	M16x110	M24x100
12	300	324	413	125x15	42	M16x110	M24x100
14	350	356	445	125x15	42	M16x110	M30x115
16	400	407	498	125x15	42	M16x110	M30x115
18	450	461	570	125x20	52	M20x125	M30X115
20	500	508	620	125x20	52	M20x125	M30X115

Specifications subject to change without notice. Contact us for updated specifications.

◇swathiengineers.nsk@gmail.com ◇ www.swathiengineers.com ◇91-721 828 4687



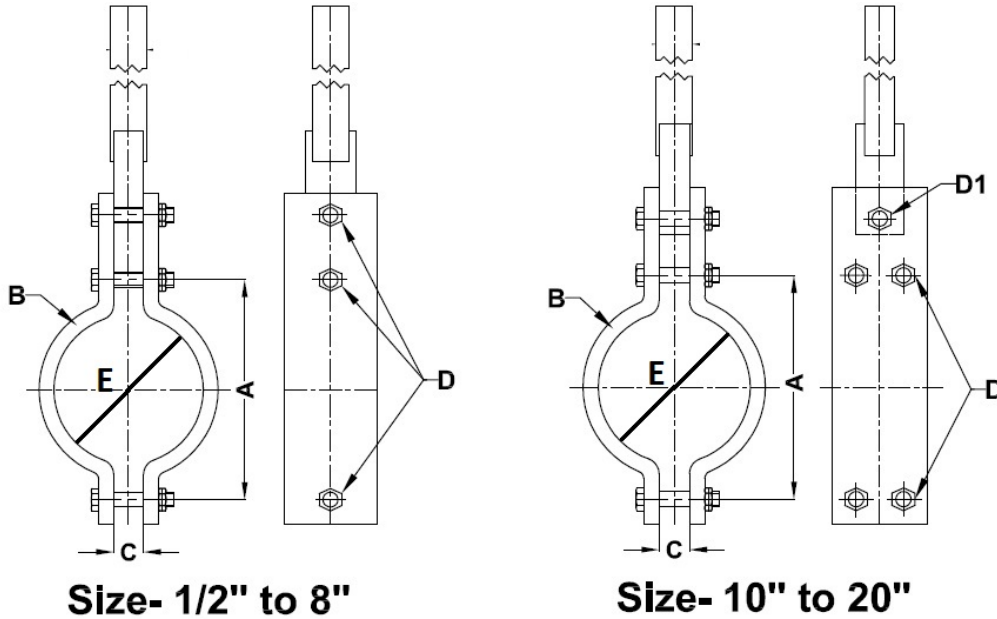
# SWATHI ENGINEERS

swathiengineers.nsk@gmail.com

www.swathiengineers.com

## Pipe Hangers for Insulated Lines

**Material:** Carbon Steel      **Finish:** Painted  
**Max Temp:** 650° F or 343° C      **Insulation:** HDPE/Rubber/PUF



**DIMENSIONAL CHART**

E mm	A mm	B mm	C mm	D mm	D1 mm
45	91	75x6	10	M12x45	
53	99	75x6	10	M12x45	
59	107	75x6	10	M12x45	
71	114	75x6	12	M12x45	
87	134	75x6	12	M12x45	
100	149	75x6	12	M16x50	
125	175	75x6	14	M16x50	
151	202	75x6	14	M16x50	
180	235	120x8	14	M12x45	M16x60
230	286	120x8	14	M12x45	M16x60
284	351	120x10	18	M16x65	M24x75
335	403	120x10	18	M16x65	M24x75

Specifications subject to change without notice. Contact us for updated specifications.

◇swathiengineers.nsk@gmail.com ◇ www.swathiengineers.com ◇91-721 828 4687



# SWATHI ENGINEERS

swathiengineers.nsk@gmail.com

www.swathiengineers.com

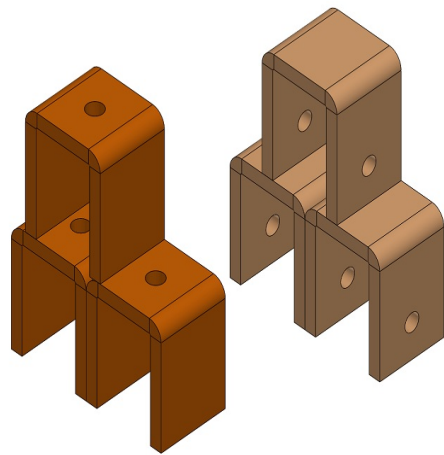
---

## Parts & Accessories for Hangers

We offer full range of customised options for Pipe Hangers depending on site requirements. **Swathi Engineers** offers options on liners to prevent thermal losses as well as to avoid damage to FRP/GRP/PVC/UPVC pipes. We also provide options on hanger rods and end connections for suspending the pipes.

### 1 End Connection

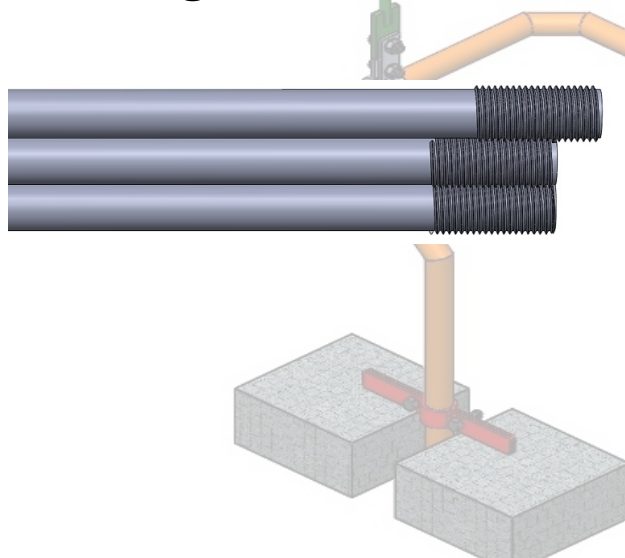
The hangers may be connected to structure either rigidly or hinged. Depending on end connection, **Swathi Engineers** offers both options. The rigid connections are welded to the structure during installation. The hinged option is connected to pivot points on structure. The hinged options are preferred to allow some axial movement of pipes.



### 2 Liners & Insulations

In addition to hangers supporting bare/uninsulated lines, we also offer options for insulated supports. **Swathi Engineers** offers hangers with insulation options in HDPE, Rubber, Stainless Steel, Hard Wood and Poly-urethane foam.

### 3 Hanger Rods



These are usually made of carbon steel. Special material available upon request. The rods are then custom cut according to height required at site. **Swathi Engineers** carries a ready stock of frequently used sizes to ensure short lead time for our customers.

---

Specifications subject to change without notice. Contact us for updated specifications.

◇swathiengineers.nsk@gmail.com ◇ www.swathiengineers.com ◇91-721 828 4687